

Precise and dynamic

ELGD axis family from Festo for industries of the future

Innovative guide technology, high rigidity and guide load capacity for more load in the same installation space - these are the features of the new ELGD axis family from Festo. In addition, powerful drive elements offer high feed forces and accelerations for shorter cycle times, a long service life and less downtime. A stainless steel cover strip is friction-free on the outside and does not allow any particles to form there. This makes the drives in the axis family ideal for use in cleanrooms.

Thanks to these properties, the ELGD axle family with ELGD-BS spindle drive and ELGD-TB toothed belt drive is predestined for future-oriented industries such as renewable energies, the production of electric vehicles, the manufacture of batteries and the semiconductor industry. The ELGD axes are among the most rigid axes on the market. Using the example of a dispensing station, the specially developed guide concept enables the dispensing head to be moved precisely and dynamically. Attachments of up to 20 kg on the Y-axis are possible.

Innovative stainless steel cover strip solution

The non-abrasive properties and clean surface protect workpieces from particles. This means that they can even be used in clean rooms. Conversely, less dirt penetrates the axles, making them suitable for use in harsh environmental conditions.

When used in cantilever systems and pick-and-place solutions for handling small parts, the ELGD axes excel with short cycle times, high precision and repeat accuracy. In handling systems for top loaders, users appreciate the cost-performance ratio and the high travel speed, especially for long strokes. In 3D printing and additive manufacturing, it is crucial that the axes perform virtually vibration-free and very dynamic movements and are resistant to harsh environmental conditions.

The ELGD-BS and ELGD-BS-WD spindle axes offer a maximum stroke of up to 2.5 meters with their durable and high-precision recirculating ball screw. The motor position can be selected as axial or parallel. The ELGD-TB and ELGD-TB-WD toothed belt axes feature virtually vibration-free carriage movement and offer a maximum stroke of up to 8.5 meters. Steel tension members reinforce the toothed belts made of different polyurethanes. The motor position at the end of the axis can be freely selected and can also be retrofitted.

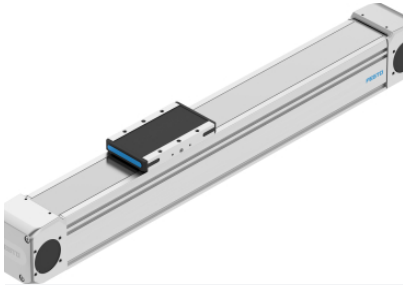
07. November 2024

Responsible
according to press
law:
Christian Österle



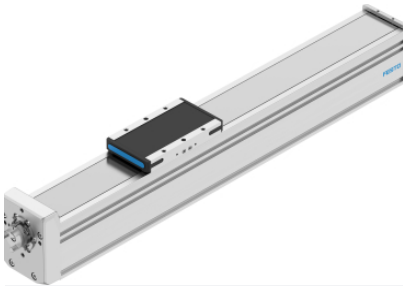
Download/View press
release and press
images.

Imágenes de prensa



ELGD Toothed Belt

The ELGD electric axis family: ELGD-BS stands for the spindle axes, ELGD-TB for the toothed belt versions



ELGD Spindle Axes

The ELGD electric axis family: ELGD-BS stands for the spindle axes, ELGD-TB for the toothed belt versions